



Instructions For The Assembly Of Your Flat Pack Hutch

- Contents
- 1 Back Panel
- 1 Floor Panel
- 2 Side Panels
- 1 Front Panel
- 1 Divider
- 1 Felt Roof Panel
- 13x2" Screws
- 3x2.5" Screws
- 13x 1" Screws

In order to help prolong the life of your hutch we recommend that it is cleaned regularly.

An EXCEL-lent way to feed your Rabbit or Guinea Pig!



50p off

Your next purchase of Supra Rabbit or Supra Guinea Excel!

Name:

Address:

Telephone:

Postcode:

I would like (please tick box)

Supra Rabbit Excel!


Supra Guinea Excel!

Supra Rabbit Excel Lite

Supra Rabbit Excel Junior & Dwarf

Please tick box if you do not want to receive any further information from Burgess Signposts

To the customer - This coupon can be used in part payment for a 2kg bag of Supra Rabbit Excel! Supra Rabbit Excel Junior & Dwarf, Supra Rabbit Excel Lite or Supra Guinea Excel! Please do not redemee your voucher by adding items to purchase a separate order item. They are not redeemable for cash. This coupon can be used against any bag of Supra Rabbit Excel! Supra Rabbit Excel Junior & Dwarf, Supra Rabbit Excel Lite or Supra Guinea Excel! The maximum amount that can be used in part payment for a 2kg bag of Supra Rabbit Excel! Supra Rabbit Excel Junior & Dwarf, Supra Rabbit Excel Lite or Supra Guinea Excel! is £1.00. This coupon is valid until 31st May 2005. Please allow 2 weeks for delivery of your payment against manufacturer's coupon. Please allow 2 weeks for Burgess Signposts, PO Box 38, Pocklington, North Yorkshire YO43 7YU. Coupon valid until 31 May 2005.



Britain's leading magazine for small animal fans and fanciers

FUR & FEATHER

www.furandfeather.co.uk

Tel: 01473 652 789 Fax: 01473 652 788

BARTHOLOMEWS



AVIAN SPECIFIC and THE COLONEL'S Range of Bird Seeds

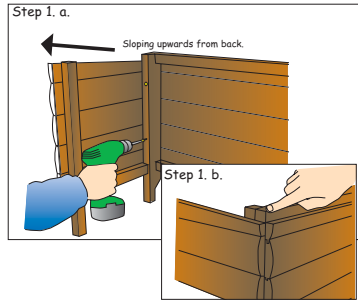
For further information on this extensive range of diets, local stockists and mail order details please contact:

South England - Tel: 01243 755753 or Fax: 01243 537232
 North England - Diotec UK Tel: 01723 379201
 Scotland - Scottish Avian Supplies Tel: 01738 636777
 e-mail: sales@avianspecific.com Website: www.avianspecific.com

Step 1

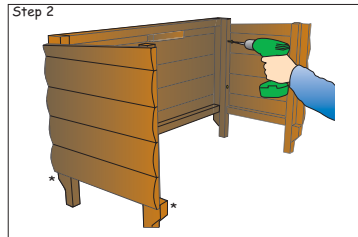
Fix the L/H side panel to the back panel using 2" screws in pilot holes provided (P.H.P).
 Note a.) Ensure the log lap on the side panel slopes upwards from back.
 Note b.) Ensure that the split log lap on both back and side panels meet together perfectly.

(*There are 1/2 angled blocks attached to side panel legs on which the back panel sits. This is here to help you line up both panels correctly. See illustration in step 2)



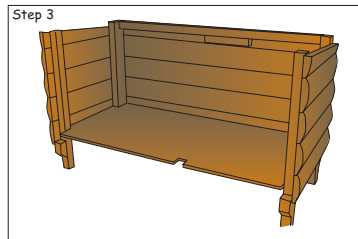
Step 2

Repeat process with R/H side.



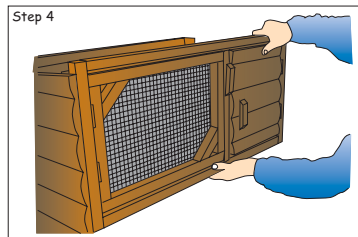
Step 3

Place floor into position, ensuring notch at front favours the R/H side (Do not screw down floor yet!)



Step 4

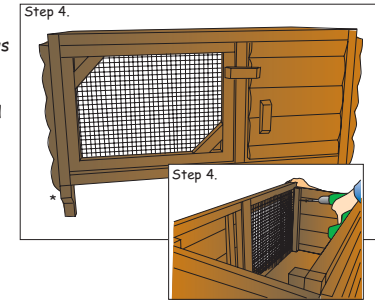
Slide the front panel into position ensuring floor slides between bottom of doors and bottom bar. The log door goes to the right and the centre bar fits in notch in floor.



Important tips to remember: A: Ensure log lap at top of back, side and panels meet perfectly. B: Ensure divider panel is attached correctly. C: Fix front of roof first.

Step 4 Cont.

Now fix front panel into place using 2" screws in pilot holes provided from inside the hutch on each side panel.
 *Again, there are 1/2 angled blocks attached on each leg to ensure correct alignment



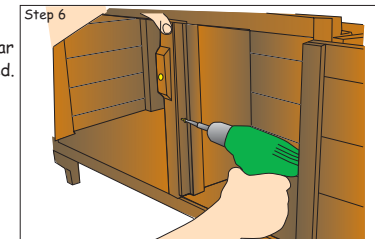
Step 5

Now you may fix floor permanently with 1" screws in pilot holes provided.
 Note. Before fixing floor in position, in order to fix front of floor, you will have to open each door.



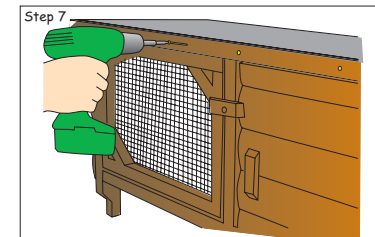
Step 6

Fix divider for sleeping area to the centre bar of hutch with 1" screws in pilot holes provided.
 Note. Ensure divider panel is flush to front bar of hutch and the baton attached to divider is visible on R/H side, this acts as a doorstep for log door.



Step 7

Place roof on hutch ensuring overhang is at the front. Centralise and fix roof at front first with 2 1/2" screws in P.H.P. Repeat process at back of the roof with 2" screws.



If you experience any problems in construction consult our website at www.pethouse-uk.com or simply call your stockist for assistance.