



Throughout 2004 Burgess Supa Dog is supporting Macmillan Cancer Relief with a great initiative – the Supa Dog Get Fit Challenge – which aims to create the biggest dog walking exercise of the year.

This sponsored Dog Walking for Fun activity will help you, your dog and your family get fit whilst raising funds for a very worthwhile cause.

Money raised from this challenge will help Macmillan Cancer Relief provide the expert care and practical and emotional support which is changing the lives of people living with cancer today.

Walk as many miles as you can, on your own with your dog, or with friends and family and their dogs. Why not organise an event if you feel challenged?



The Supa Dog Complete Diet range has a variety to suit all lifestyles, from Puppy to Adult Pet and Senior.

There is a variety to suit dogs with all dietary needs, including Supa Dog Seniors, made from Lamb and Rice. Supa Dog Heavy which is extra large Supa Dog Complete for dogs with bulky skin and Supa Dog Light for the portly pet.

The Supa Dog Get Fit Challenge is launched March 2004. All walks are to be completed, and money raised sent to Macmillan Cancer Relief by November 30th 2004.

Visit our website at www.supadoggetfitchallenge.co.uk



Burgess Supafeeds, PO Box 38, Pickering, YO18 7YH Tel: 01751 474123 www.burgesssupafeeds.co.uk email: customercare@burgessgroup.plc.uk
 Burgess, the Burgess logo and Burgess Supa Dog are registered trade marks of Burgess Group plc. © Burgess Group plc 2004. All information correct at time of going to press.

Taking part in the Supa Dog Get Fit Challenge 2004 could also see you winning some great prizes from Burgess Supa Dog.

Prizes include:

Prize for Most Money Raised By An Individual - A weekend break for you and your dog, walking boots or trainers, a walking coat, year's supply of Supa Dog and trophy.

Prize for Most Money Raised By A Club or Event - £500 worth of Supa Dog to share.

Everyone who owns a dog or has a friend or colleague with a dog can help. However small your donation, the team at Burgess Supa Dog wants to encourage everyone to walk their dog more and get fit, while raising money to help people living with cancer.

Burgess Supa Dog aims to create the biggest dog walking exercise in the UK in 2004. Take action today - take the Supa Dog Challenge - Walk Your Dog, Get Fit, Have Fun and Raise Cash for Macmillan Cancer Relief.



Instructions For The Assembly Of Your Flat Pack Kennels

Contents

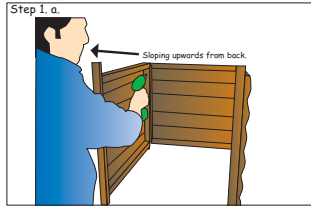
- 1 x Back Panel
- 2 x Side Panel
- 1 x Front Panel
- 1 x Floor
- 1 x Felted Roof Panel
- 8 x 2" Screws
- 10 x 1" Screws
- 4 x 3 1/2" Screws

In order to help prolong the life of your kennel we recommend that it is cleaned regularly.

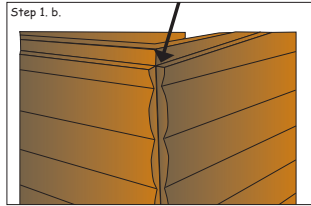
Step 1

Fix 2 x side panels to back panel using 2" screws in pilot holes provided (P.H.P).

a: Ensure log lap of side panels slopes from back upwards.

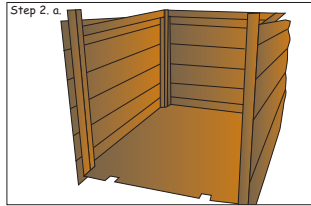


b: Ensure log lap at top of side and back panels meet perfectly

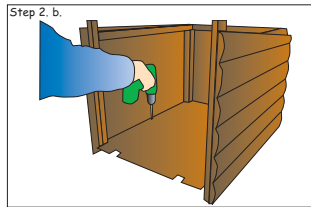


Step 2

a. Place floor into position with notches cut out at front of kennel.

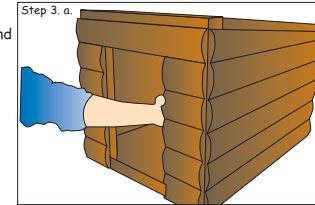


b. Fix floor into place with 1" screws in pilot holes provided. At this point, leave 3 screws un fixed on R/H side of kennel.

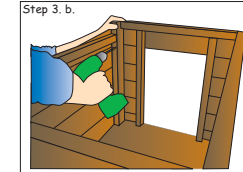


Step 3

a. Place kennel front into position, you will find the front bars at the entrance to the kennel fit into the notches in the floor.



b. Fix front panel from inside the kennel with 2" screws in pilot holes provided.

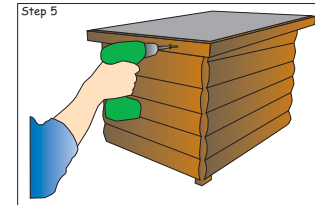


Step 4

Now you may fix remaining floor screws

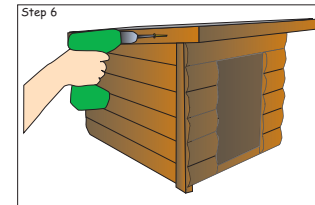
Step 5

Push roof flush to the back of the kennel ensuring maximum over hang at front. Fix back of roof first with 3" screws in P.H.P.



Step 6

Finally fix roof on sides with 3" screws in P.H.P.



As well as the keeping inside clean we recommend re-treat your kennel on its exterior twice yearly in order to prolong its life especially before wet and winter period.

If you experience any problems in construction consult our website at www.pethouse-uk.com or simply call your stockist for assistance.