

BARTHOLOMEWS



AVIAN SPECIFIC and THE COLONEL'S Range of Bird Seeds

'DIETS WITH A DIFFERENCE'

Revolutionary new diets pushing the way forward in avian nutrition. For 100 years Bartholomew's has manufactured birdseed and provides the highest quality diets to cater for all the nutritional needs, taste and stimulation for all bird species.

The Colonel's Range provides diets for all pet and wild birds including:

- * Parrot Feast and Tropical mixes
- * Cockatiel, Finch, Budgie and Canary seeds
- * Parakeet and Lovebird diets
- * Cityblend and wintablend wild bird seed
- * Straights of any ingredients



The Avian Specific range offers 22 premium diets for all breeding and pet seed eating birds such as:

- * Amazons, Cockatoos, Macaws and African Greys
 - * Cockatiels and Rosellas
 - * Budgies, Canaries and Finches
- Plus an extensive range of supplementary products

For further information on this extensive range of diets, local stockists and mail order details please contact:

South England - Tel: 01243 755753 or Fax: 01243 537232

North England - Dietec UK Tel: 01723 379201

Scotland - Scottish Avian Supplies Tel: 01738 636777

e-mail: sales@avianspecific.com Website: www.avianspecific.com

Are you experiencing problems buying **QUALITY** birds?

THE PET BIRD COMPANY
has the answer

We are specialist suppliers of **DOMESTIC** breed birds all year round.

For a complete price and availability list contact:

Tel: 01235 817298 Fax: 01993 704987 Email: petbirddomestic@aol.com



Instructions For The Assembly Of Your Flat Pack Aviary

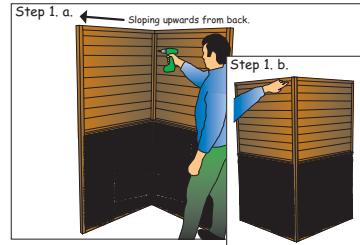
Contents

- 1 x Log Back Panel
- 1 x Log L/H Side Panel
- 1 x Log R/H Side Panel
- 1 x Breeding Log Front Door
- 1 x Floor Panel
- 1 x Felt Roof Panel
- 5 x Aviary Wire Panels
- 1 x Aviary Door Panel
- 49 x 2^{1/2}" Screws
- 10 x 1" Screws

In order to help prolong the life of your aviary we recommend that it is cleaned regularly.

Step 1

a/ Attach back log panel and L/H side panel with 2 1/2" screws in pilot holes provided (P.H.P). Ensure log lap on side slopes upwards from back.
 B. Ensure that split log lap on top of both and side panels meet perfectly.



Step 2

Repeat process with R/H side log panel.

Step 3

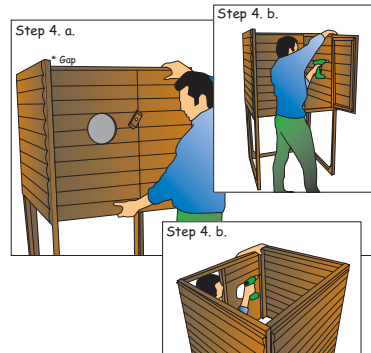
Fix floor into place with 1" screws in P.H.P. Ensure notch at front of floor favours R/H side. Also leave 3 screws on R/H side unfixed.



Step 4

a. Slot breeding box front panel into place ensuring floor slides under door and centre bar fits into notch in floor.
 Note: Ensure floor is flat and square and you leave a gap* at top of front panel with sides, so enabling tile roof panel to sit flush when fixing (see step 8)

b. You will need to attach front panel to side from inside so you will need to open door and fix with 2 1/2" screws in P.H.P



Step 5

Fix remaining screws into floor on R/H side & in front.

Step 6

Fix wire aviary panels to log side panels with 2 1/2" screws in P.H.P. Continue process with another wire panel and repeat process on other side.



Step 7

Fix aviary door panel in between two side aviary panels with 2 1/2" screws in P.H.P. Note. You will have to open wire door to fix bottom R/H Side.



Step 8

Fix remaining aviary panel, which acts as roof panel for flight area in between side aviary panels, and so butts up against front panel. The roof panel should sit nicely on top of breeding log front panel, fix panel into place with 2 1/2" screws in P.H.P.
 (*Insert screws before positioning around top bars of aviary this will help with construction especially if you're on your own).



Step 9

Finally fix felt roof panel onto breeding box section. Ensure over hang is at front of box area and fix back of roof first with 3 1/2" screws in P.H.P. Then continue to fix roof on sides with 3 1/2" screws in P.H.P.
 (Angle screws at an angle to ensure good fixing.)



Tip. Where possible, pre-screw screws in P.H.P before fixing so speeding up construction (especially if you are on your own).

If you experience any problems in construction consult our website at www.pethouse-uk.com or simply call your stockist for assistance.